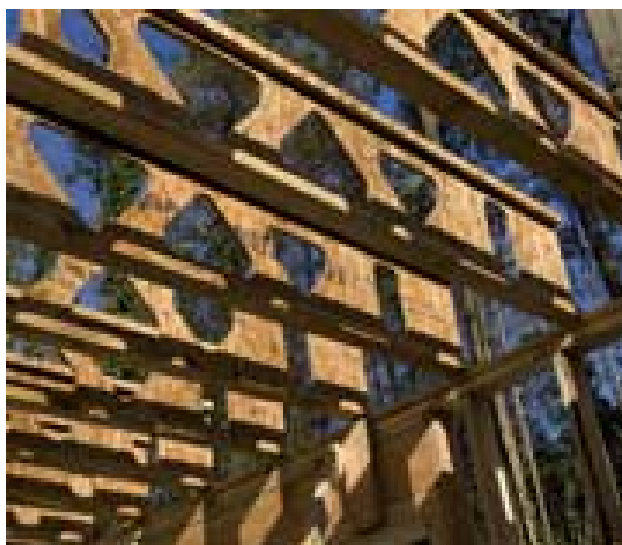
	FALMOUTH VOLUNTEER FIREFIGHTER'S ASSOCIATION FIRE AND EMERGENCY MEDICAL SERVICES <i>SAFETY BULLETIN</i>	
	SUBJECT: XJ 85® Wood I Beam Joists by Georgia Pacific	NUMBER: SB09-001
	APPROVED: Kevin Good, Fire Chief	INITIATED 03/16/2009
	PREPARED: James Morris, Sr., Safety Officer	REVISED

- Here is a new lightweight joist by Georgia-Pacific



- As you can see, it is made of 2"x 4"'s and glue-lam chip board. Strategically placed openings accommodate plumbing, wiring and duct work. It also removes any "fat" from the joist.
- It is available in 16" depth and standard lengths from 6'- 26'.
- It is so light; one worker can handle a 26' joist.

Division Chief Milliken provided the following information on this topic:

Although these XJ85 wood I-beams have been available since about August of 2007, we have not seen them in any COMMERCIAL construction in Stafford yet. Chief Milliken

will be touching base with the residential building inspectors and wouldn't be surprised if they have already started to see this in the field.

Unless the State of Virginia produces a specific prohibition to the use of these components, they will and are a permitted Type V construction component (Stafford or any other VA jurisdiction can not set its own local restrictions on building construction components).

- If you encounter any, please advise the Training Division and the Safety Division.

Additional Images of the Joist

