

IMPORTANT SAFETY NOTICE

YOUR IMMEDIATE ACTION IS REQUIRED



IMPORTANT SAFETY NOTICE Concerning Scott® AV-3000® Facepieces

DATE: April 20, 2005

TO: All Users of Scott AV-3000 Facepieces

WARNING

Scott has received reports of cracks being found in the plastic lens frames that encircle the AV-3000 facepiece. Read and follow the instructions contained in this notice. Failure to follow the instructions cited here may result in further damage to the facepiece which may expose the user to the atmosphere the AV-3000 equipped respirator was intended to protect against causing serious injury or death.

This notice concerns the Scott AV-3000 Facepiece Lens Frames manufactured between August, 2003 and September, 2004. The lens frame is the black plastic ring that goes around the outside perimeter of the lens, over the face seal. The frame is made of two pieces, a top and a bottom, and the pieces connected together at the sides of the facepiece. See Figure 1 for a photograph of an AV-3000 facepiece. AV-3000 facepieces are used with a variety of Scott breathing equipment including:

NxG₂™ SCBA

Air-Pak® 50 SCBA

2.2 2216 PSI SCBA

3.0 3000 PSI SCBA

4.5 4500 PSI SCBA

E-Z Airline® Air Supplied Respirator

Ska-Pak® Air Supplied Respirator

Ska-Pak Plus Air Supplied
Respirator

Ska-Pak AT Air Supplied
Respirator

Or when used in conjunction with adapters to make full facepiece chin or twin respirators or a PAPR (Adapter P/N 804058-01, 804057-01, 805622, 805059-01, 805665 or 805556).



Figure 1
AV-3000 Facepiece



Figure 2
Lens Frame

Scott is notifying you that there have been reports of cracks being found in the lens frame during routine inspection. The cracking problem has been traced back to production nonconformances at the manufacturer of the lens frame. See Figure 2 for a photograph showing the location of lens frame.

Molded plastic articles, like the lens frame, can exhibit markings known as “flow lines”. Flow lines can be difficult to distinguish from cracks without close inspection. Flow lines appear where molten material flows together from two different directions in the mold. Our investigation has shown that they do not represent a problem in the part. Figures 3, 4 and 5 show typical differences between cracks and flow lines when the plastic frame is molded in the factory.

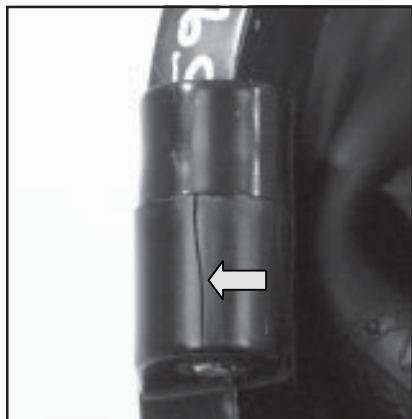


Figure 3. Crack

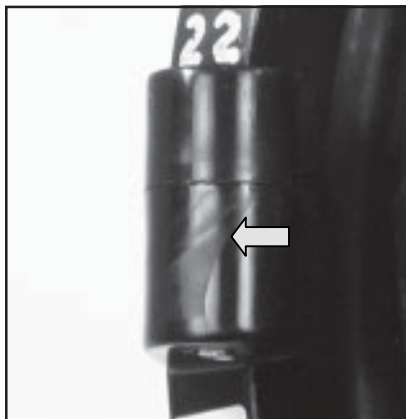


Figure 4. Flow Line

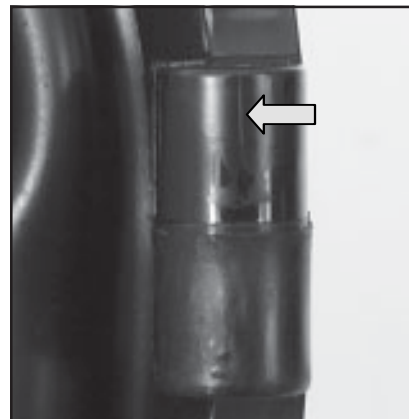


Figure 5. Flow Line

Scott recommends you fully inspect your AV-3000® facepiece(s) now and routinely as specified in the user instructions supplied with your facepiece and respirator, or as stipulated in your respiratory protection program. To inspect your facepiece, begin by cleaning the facepiece as per your instruction manual. Check to see if your facepiece was manufactured between August, 2003 and September, 2004. You can determine the date of manufacture of your facepiece from the white label at the chin of the lens frame (See Figure 6). If the label is missing or unreadable, check your purchase order records. If you are still unable to establish the date, contact Scott Technical Support and they will assist you in identification of the date of your facepiece.



Figure 6. AV-3000 Label
LOT# is the date. MMDDYY

If your facepiece was manufactured in the affected date range, remove any communications equipment mounting brackets from the facepiece following the procedures as set forth in the accessory instructions, and set them aside. Carefully inspect the entire lens frame for cracks. If you do not observe any cracks, mark the facepiece with the letter “A” on the lens frame with a white Sharpie® pen near the left connector on both sides of the connector (top and bottom frames) in the area of the white label to show you have inspected that facepiece. If you locate a facepiece with a cracked lens frame, remove it from service and set it aside for repair, following the same procedures as you would for any other part discrepancy you could possibly find during routine inspections.

If you observe cracking in the lens frame of your AV-3000 facepiece, notify Scott or your Authorized Scott Distributor immediately by completing the attached user response form or by calling the Scott Technical Support Department at 1-800-247-7257. You will need the number of facepieces affected, shipping address and a contact person and their phone and fax numbers. Scott will replace the lens frames. The appropriate number of frames will be shipped directly to you at no cost. Replacement lens frames can be installed by you or if you require assistance contact your local Scott Authorized Service Center.

Scott has received no reports of injury due to this condition, however, Scott recognizes the importance these products play in everyday use and is committed to your safety by making you aware of any important information that may potentially affect your ability to perform your duties.

If you have any questions regarding this notice contact Scott Health & Safety at 1- 800-247-7257.

USER RESPONSE FORM

Applying to Scott AV-3000® Facepiece Program

**SEE IMPORTANT SAFETY NOTICE H/S 6510 DATED 04/20/05 FOR SPECIFIC INFORMATION
REGARDING FACEPIECE IDENTIFICATION AND INSPECTION INSTRUCTIONS**

PLEASE TYPE OR PRINT

Company/Organization

Shipping Address (**Must include street address for delivery**)

City

State/Province

Zip/Postal Code

Company/Organization Contact Individual, Name and Title

Telephone Number

FAX Number

E-Mail address

Authorized Signature

Number of AV-3000 facepieces exhibiting cracked lens frame _____

Scott Distributor from whom these were purchased _____
(Scott Authorized Distributor Name)

Please indicate the best time to call if additional information is required _____ AM/PM

For additional information concerning the Scott AV-3000 Facepiece Program or for assistance in identification of Scott AV-3000 facepieces in your possession, please contact SCOTT Technical Support at 1-800-247-7257, or your Scott Authorized Distributor.

Once you have completed this form, FAX it to SCOTT Health and Safety at 1-704-291-8340 in the United States, or fold and seal as marked and place in U.S. Mail. Outside the United States, fold, seal, apply proper postage and place in mail.



FOLD



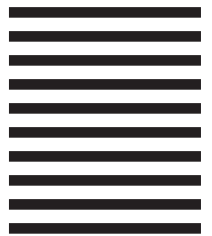
NO POSTAGE
NECESSARY
IF MAILED
IN THE
UNITED STATES

BUSINESS REPLY MAIL

FIRST CLASS MAIL PERMIT NO. 63 MONROE, NC

POSTAGE WILL BE PAID BY ADDRESSEE

SCOTT HEALTH & SAFETY PRODUCTS
ATTN: SCOTT AV-3000 FACEPIECE PROGRAM
P.O. BOX 569
MONROE NC 28111-0569



FOLD

Monroe Corporate Center • P.O. Box 569 • Monroe, NC 28111
Telephone: 800.247.7257 • Facsimile: 704.291.8330
www.scotthealthsafety.com • sh-sale@tycoint.com

ISO 9001 Registered. All Rights Reserved.

USER RESPONSE FORM, part of H/S 6510 4/05

tyco / **SCOTT**[®]
HEALTH AND SAFETY